



410GX2-PoE

Datasheet

Aiming to create better and safer working environments and life experiences through the products we deliver.



AVCOMM Technologies, Inc

www.avcomm.us

Email: info@avcomm.us

Phone: (713) 933-4534

Address: 333 West Loop North, Suite 460
Houston, TX 77024
United States

Reliable Plug and Play Industrial Ethernet Switch for Automation and Electrical OEM

410GX2-PoE

Industrial Unmanaged Ethernet Switch

AVCOMM 410GX2-PoE unmanaged Ethernet switch is 2-port 1000Base-X and 8-port 10/100Base-TX RJ-45 which supports IEEE802.3af/at (PoE), provides connected device 30W per PoE network interface. It is highly scalable and can transmit data over long distances through fiber-optic ports. It has wide operation temperature range, high anti-EMI capability to ensure stable work in harsh industrial environments and supports DIN Rail-mounted/wall-mounted to facilitate in various industrial network applications.



Features & Benefits

Fast Ethernet Switching

- Eight (8) 10/100/100BaseT(X) RJ-45 ports and two (2) 1000BaseFX port (SC ST FC optional)
- 8 K MAC address table
- Store and forwarding with non-blocking technology
- Support 8 x 100M PoE, IEEE802.3af/at(PoE)

Power protection

- Provide overload protection
- Provide reverse connection protection

Rugged Mechanical Design

- Robust design protects from mechanical deformation
- IP40 industrial rating to withstand harsh environments
- Wide operating temperature range -40°C ~ +75°C

IEEE 802.3u EEE Power Management

- Up to 30W per PoE port
- Energy Efficient Ethernet for low power requirement
- Idle power saving mode for energy efficiency

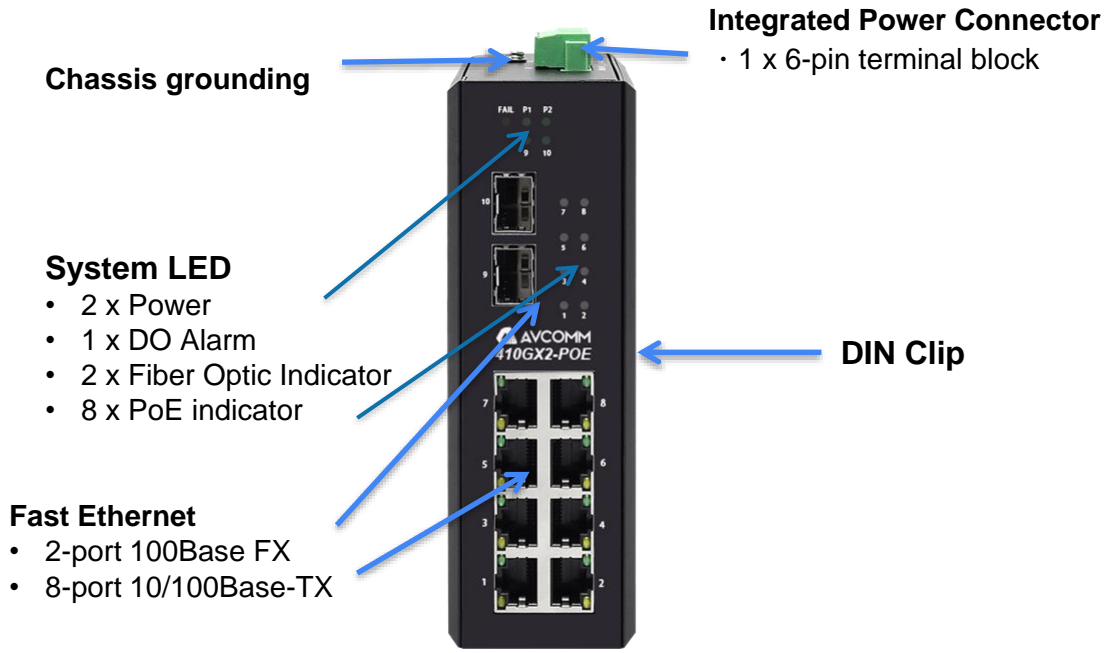
Order Information

Model Name	Description
410GX2-PoE-SC	10-Port Industrial Unmanaged PoE Ethernet Switch, 8 RJ45 10/100BaseT(X) with PoE/PoE+ supported, 2 1000BaseFX (Multimode, SC style connector), dual power Input 48VDC(46~57), -40°C to +75°C
410GX2-PoE-ST	10-Port Industrial Unmanaged PoE Ethernet Switch, 8 RJ45 10/100BaseT(X) with PoE/PoE+ supported, 2 1000BaseFX (Multimode, ST style connector), dual power Input 48VDC(46~57), -40°C to +75°C
410GX2-PoE-FC	10-Port Industrial Unmanaged PoE Ethernet Switch, 8 RJ45 10/100BaseT(X) with PoE/PoE+ supported, 2 1000BaseFX (Multimode, FC style connector), dual power Input 48VDC(46~57), -40°C to +75°C
410GX2-PoE-SFP	10-Port Industrial Unmanaged PoE Ethernet Switch, 8 RJ45 10/100BaseT(X) with PoE/PoE+ supported, 2 1000BaseFX (SFP slot), dual power Input 48VDC(46~57), -40°C to +75°C

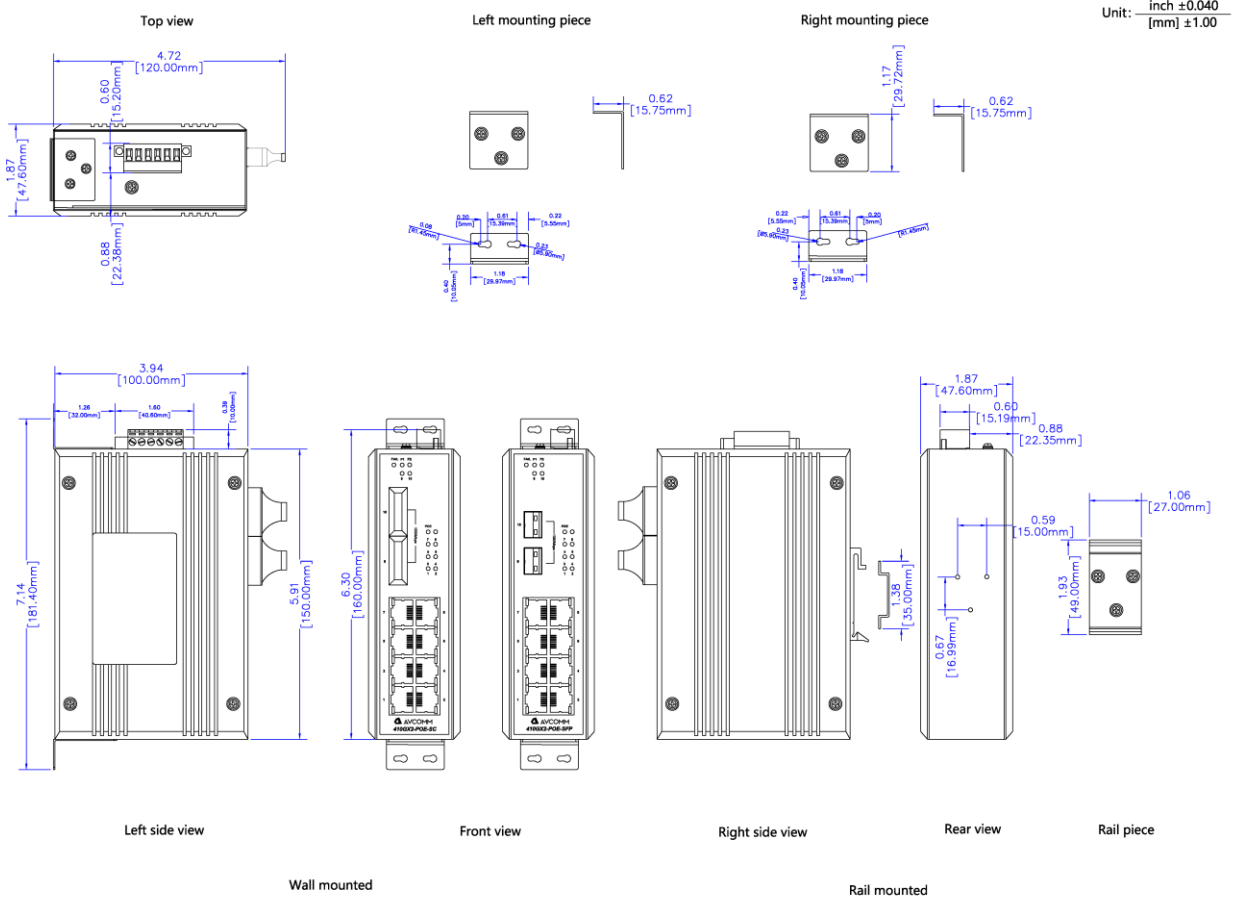
 Specifications

Technology		
Standard	IEEE 802.3af/at, IEEE802.3, IEEE802.3u, IEEE802.3z Flow control:IEEE802.3x flow control, backpressure flow control	
Performance		
Switch Technology	Store and Forwarding Technology with non-blocking	
Number of MAC Address	8 K	
Packet Buffer Memory	1 MB	
Backplane bandwidth	7.6 Gbps	
Forwarding rate	1488095 pps	
Interface		
Ethernet Port	8 x 10/100BaseT(x)RJ-45 , 2 x 1000Base FX, auto-MDI/MDI-X	
System LED	2 x Power: Green On ; 1 x DO Alarm: Red on; 2 x Fiber Optic Indicator: Green On; 8 x PoE Indicator: Green On	
Ethernet Port LED	Link (Green On), Active (Green Blinking)	
Power Input	6-Pin Removable Terminal Connector	
Power Requirement		
Input Voltage	48VDC(46~57),redundant	
Reverse Polarity Protect	Yes	
Power Consumption	single POE network interface up to 30W, the total power consumption no more than 150W	
Mechanical		
Enclosure Material	Metal	
Dimension	150 mm x 47.6 mm x 100 mm (W x H x D)	
Ingress Protection	IP40	
Weight	940 g	
Installation method	DIN Rail-mounted/wall-mounted	
Environmental		
Operating Temperature & Humidity	-40°C ~ +75°C , 0%~95% Non- Condensing	
Storage Temperature	-40°C ~ +85°C	
MTBF	>2,000,000 hours	
Warranty	5 years	
Standard		
EMI	FCC Part 15 Subpart B class A, EN55022 class A	
EMS	IEC(EN)61000-4-2(ESD) IEC(EN)61000-4-3(RS) IEC(EN)61000-4-4(EFT) IEC(EN)61000-4-5(Surge) IEC(EN)61000-4-6(CS) IEC(EN)61000-4-8 IEC 60068-2-27(Shock) IEC 60068-2-32(Freefall) IEC 60068-2-6(Vibration)	
100Base FX		
Multi Mode	AVC-SFP-FX-SX (550m)	Wavelength: 850 nm
	AVC-SFP-FX-S (2km)	Wavelength: 1310 nm
Single Mode	AVC-SFP-FX-10 (10km)	Wavelength: 1310 nm
1000Base FX		
Multi Mode	AVC-SFP-SX (550m)	Wavelength: 850 nm
	AVC-SFP-LX-S (2km)	Wavelength: 1310 nm
Single Mode	AVC-SFP-LX-10 (10km)	Wavelength: 1310 nm

Function interface



Installation dimensions



AVCOMM Technologies, Inc. All rights reserved. Trademarks and trade names that may be used in this document are owned by their respective companies. Specifications subject to change without notice. Please ask our sales for the most up-to-date product information. Avcomm Technologies Inc. Add: 333 West Loop North Ste. 460, Houston, TX 77024