



AVCOMM®

AVC-ES105

Datasheet

Aiming to create better and safer working environments and life experiences through the products we deliver.



AVCOMM Technologies, Inc

www.avcomm.us

Email: info@avcomm.us

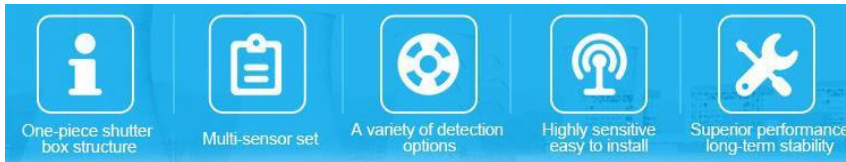
Phone: (713) 933-4534

Address: 333 West Loop North, Suite 460
Houston, TX 77024
United States

High Integrated Out-Door Weather Station CO2, PM2.5, Illumination, Temperature, Humidity, Noise, Atmospheric Pressure Sensor

AVC-ES105-CO2/AVC-ES105-PM

The AVC-ES105 series is an intergraded outdoor sensor unit for all types of environmental and weather monitoring sensors include illumination, temperature, humidity, noise, Atmospheric Pressure and CO2 or PM2.5&10. The monitored data is output through RS- 485 interface by Modbus protocol. The AVC-ES105 sensor unit accepts 10~30Vdc power input voltage and is protected by the IP65 grade Anti-U/V lightweight ABS instrument shelter radiation shield. With the optional gateway AP222 or LoRa end node AP144-LC, the data can be monitor on the cloud platform.



Features & Benefits

High Integrated Monitoring

- Intergraded multiple sensors
- Central management by sharing a signal output
- Support Industrial Modbus RTU protocol, RS485

Outdoor Protective Enclosure

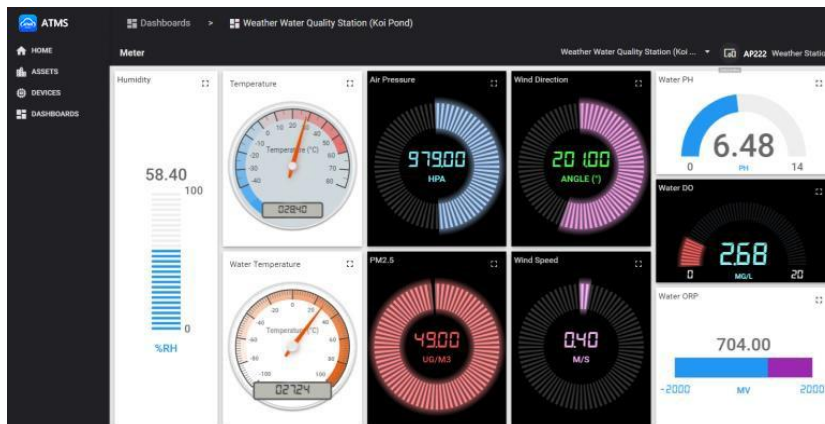
- Prevent direct ultraviolet radiation to the sensors
- Avoid rapid aging of sensors under harsh environmental conditions such as strong winds, rain, and snow
- The sensor parts are ventilated for truly sensing the changes in external detection parameters

Flexible Design

- Customized Shutter Height
- Single or multiple parameters both can use small shutter, small size, light weight and easy to install
- Customized Monitoring parameters
- Each parameter is independent and high sensitivity, users can freely integrate monitoring parameters

Work with IoT Cloud Platform – ATMS

- Real-time online monitoring, analysis, reporting
- Remote cloud security and visual management





Ordering Information

| Model | Description |
|---------------|--|
| AVC-ES105-PM | Outdoor Environment Basic Unit, Temperature, Humidity, Noise, Pressure, Illumination, PM2.5/10, RS485 Modbus, 10-30V Power |
| AVC-ES105-CO2 | Outdoor Environment Basic Unit, Temperature, Humidity, Noise, Pressure, Illumination, CO2, RS485 Modbus, 10-30V Power |



Specifications

| Temperature & Humidity | |
|---------------------------------------|--|
| Measuring Range | Temperature: -40~120 °C (Sensor Measuring Range) Humidity: 0%RH~99%RH |
| Accuracy | Temperature: ±0.5°C (25°C) Humidity: ±3%RH (60%RH,25°C) |
| Long term stability | Temperature: ≤0.1°C/year Humidity: ≤1%RH/year |
| Response time | ≤1s |
| Illumination | |
| Measuring Range | 0~200000 Lux |
| Accuracy | ±7% (25°C) |
| Long term stability | ≤5%/y |
| Response time | 0.1s |
| CO2 (Either CO2 or PM2.5/PM10) | |
| Measuring Range | 0~5000ppm |
| Resolution | 1ppm |
| Accuracy | ±(50ppm+ 3%F.S) (25°C) |
| Long term stability | ≤1%/y |
| Response time | ≤2s |
| PM2.5/PM10 (Either CO2 or PM2.5/PM10) | |
| Measuring Range | 0~1000ug/m3 |
| Resolution | 1ug/m3 |
| Accuracy | 50%@0.3um, 98%@>=0.5um ±10ug/m3@0~100ug/m3 |
| Long term stability | ≤1%/y |
| Response time | ≤90s |
| Atmospheric Pressure | |
| Measuring Range | 0~120Kpa |
| Accuracy | ±0.15Kpa@25°C 101Kpa |
| Long term stability | -0.1Kpa/y |
| Response time | ≤1s |
| Noise | |
| Measuring Range | 30dB~130dB |
| Frequency Range | 20Hz~12.5Hz |
| Accuracy | ±0.5dB (In the reference pitch, 94dB@1kHz) |
| Long term stability | ≤3db/y |
| Response time | ≤1s |

AVCOMM Technologies, Inc. All rights reserved. Trademarks and trade names that may be used in this document are owned by their respective companies. Specifications subject to change without notice. Please ask our sales for the most up-to-date product information. Avcomm Technologies Inc. Add: 333 West Loop North Ste. 460, Houston, TX 77024

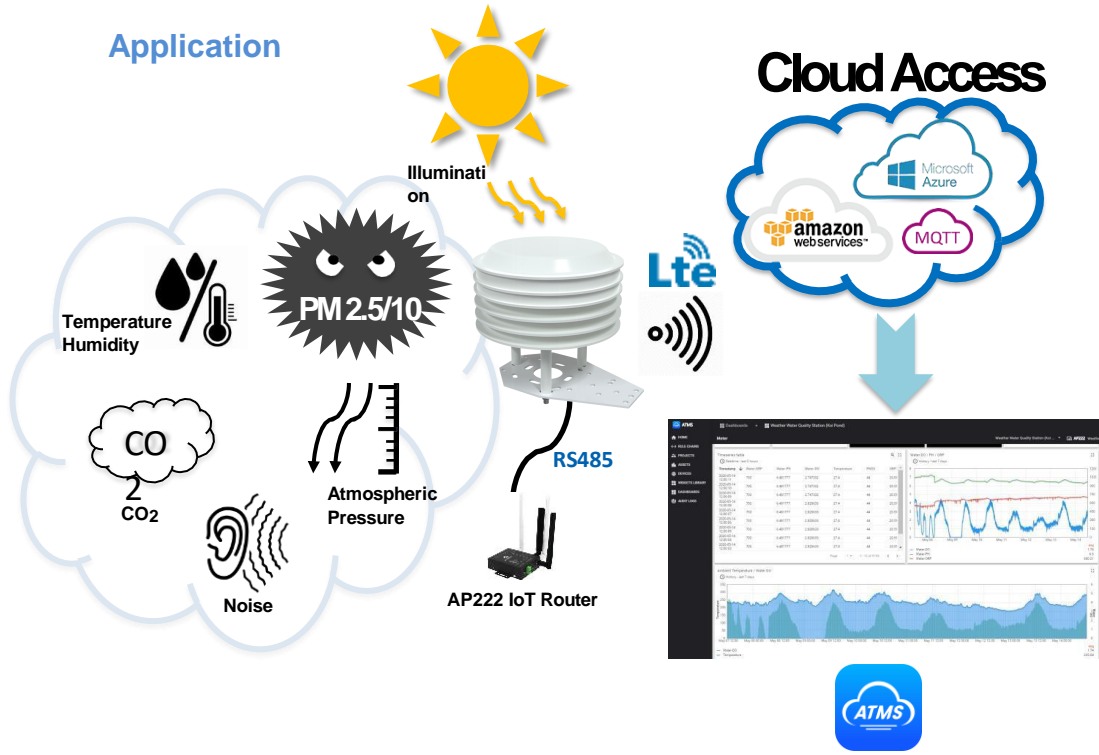


Specifications

| System Parameters | |
|-----------------------------|---|
| Power Range | DC 10~30V, 0.8W Power consumption |
| Enclosure Material | Shelter Box, Plastic ABS, Anti-U/V, UL94 V0 |
| Enclosure Protection | IP65 Protection Level |
| Enclosure Dimension | 138mm (Diameter) x 145 mm (High) |
| Communication | Modbus RTU protocol, 2-Wire RS-485 RS485 Modbus RTU Pulling & Waiting Time ≥ 200 m/s |
| Op. Temperature | -20~ 60C, 0~95% Humidity, No Condensing |

| ES105 Modbus Register Information | | | | |
|-----------------------------------|------------------------------|-----------------------------------|-----------|-----------------------------|
| Register Address | PLC or Configuration Address | Content | Operation | Description |
| 500 | 40501 | Humidity Value | Read only | Real Value = Read Value /10 |
| 501 | 40502 | Temperature Value | Read only | Real Value = Read Value /10 |
| 502 | 40503 | Noise Value | Read only | Real Value = Read Value /10 |
| 503 | 40504 | PM2.5/CO2 | Read only | Real Value |
| 504 | 40505 | PM10 Value | Read only | Real Value |
| 505 | 40506 | Atmospheric Pressure (Kpa) | Read only | Real Value = Read Value /10 |
| 506 | 40507 | 20W Lux Value (High 16 bit Value) | Read only | Real Value |
| 507 | 40508 | 20W Lux Value (Low 16 bit Value) | Read only | Real Value |

Function interface



Installation dimensions

