

Industrial Ethernet Switches

Unmanaged

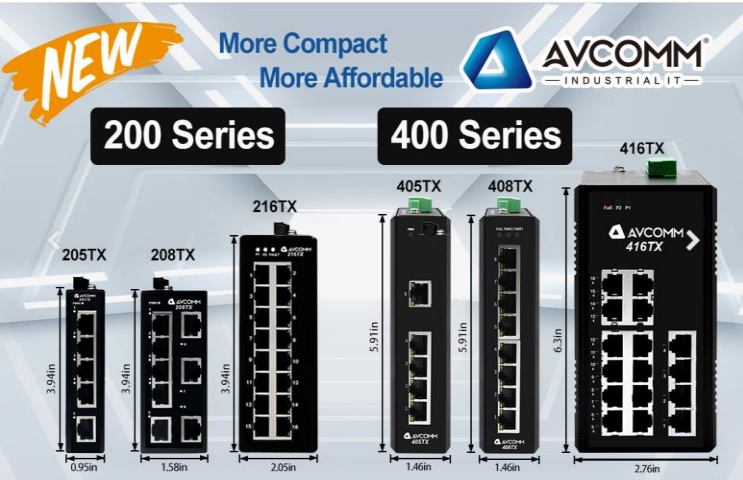
400, 4000, 200, 2000 series

- Extreme compact & rugged mechanical design
- Plug-and-play functionality, support AC/DC power input
- Automatic speed detection, duplex and cable sensing
- For use in electrical and control panel integrations, power protection

Layer 3

8000-L3 series

- Layer 3 rackmount/DIN Rail industrial switches
- Industrial IoT LAN & Cloud Management
- Advanced cybersecurity features, IEC-62443-L3/4
- Rugged design for Industrial control room and wayside network switching



Managed

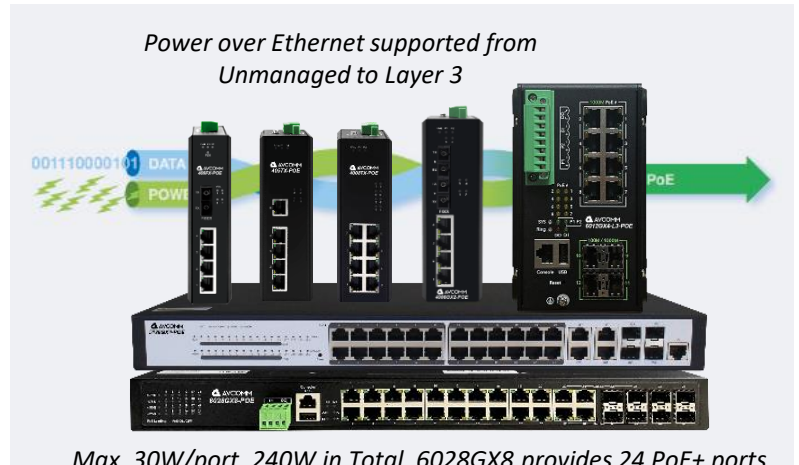
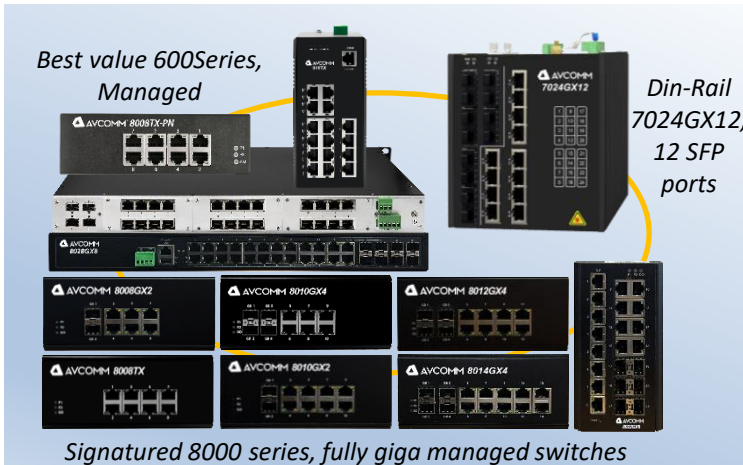
600, 7000, 8000 series

- High performance CPU & fully managed switching
- Rugged design for wayside network switching with wide power input range
- ITU ERPSv2 PLUS Ring technology
- EtherNet/IP™ and PROFINET® models are available

PoE

400-POE, 4000-POE, 6000-PoE/6000-L3-POE, 5100-PoE

- Power over ethernet switching and ultra-high throughput
- Extreme PoE Capability, IEEE 802.3af IEEE 802.3at Power over Ethernet models available
- Rugged Design for Security Surveillance, transmits power and data over a single cable



Data Switch

5100, 5200, 5300

- 10/100/1000Base-T(X) ,100/1000BaseSFP+ and 1G/10G Base SFP+ are available
- Innovative VSS Virtualized Virtual Chassis Technology
- Industrial Ethernet ring network, zero delay, zero packet loss
- Comprehensive IPv6 Solutions



Built for industrial data and backbone networks

A new generation of aggregation 10 Gigabit switches with industrial features, launched by AVCOMM for next-generation IP metropolitan area networks, large campus networks, and enterprise networks.

Series	Total Ports	Exchange Capacity	Packet Forwarding Rate
5100	Up to 28	336Gbps/ 3.36Tbps	Up to 126Mpps
5200	Up to 54	336Gbps/ 3.36Tbps	Up to 178Mpps
5300	Up to 54	598Gbps/ 5.98Tbps	Up to 342Mpps



Wireless Router

302W, 502W, 502W-IP67, 502W-5GNR

- High Performance Wireless LAN
- Wireless MESH System
- Cloud Management Service
- Slim & Rugged Design for Industrial IoT Application
- Enhanced Cyber Security & Redundancy

Cost effective Wireless Ethernet Router, supporting Mesh network.

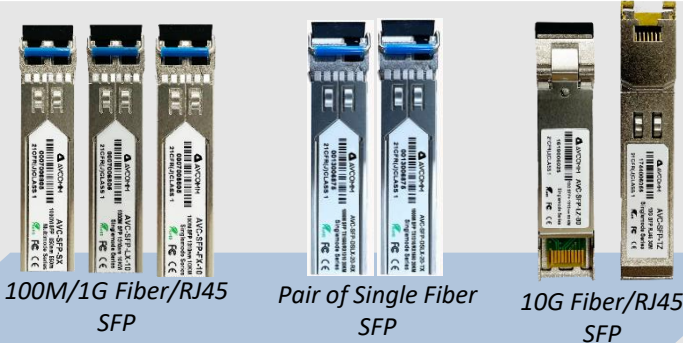


Accessories

SFPs

AVC-SFP-FX, AVC-SFP-LX, AVC-SFP-SX, AVC-SFP-TZ, AVC-SFP-LZ, AVC-SFP-TX

- Optional 100M/1G/10G RJ45/SFP port,
- Multimode and singlemode are available, up to 80km (Max)
- Wide temperature, -40°C~85 °C
- DDM (Digital Diagnostic Monitoring) support



100M/1G Fiber/RJ45 SFP

Pair of Single Fiber SFP

10G Fiber/RJ45 SFP

Communication Converters

Serial Server

SEVR-M1, SEVR-M2, SEVR-M4, SEVR-M8, SEVR-M1-MODBUS

- Bidirectional data transmission between RS-232/485/422 and TCP/IP or Modbus/Ethernet protocol conversion
- With metal housing and multiple mounting design, suitable for industrial applications
- Multiple operating modes are available



Protocol Converters
Modbus, Profibus, CAN etc.

Serial Servers
Serial to Ethernet



Tel: 713-933-4534 Web: www.avcomm.us Email: info@avcomm.us

AVCOMM Technologies, Inc. All rights reserved. Trademarks and trade names that may be used in this document are owned by their respective companies. Specifications subject to change without notice. Please ask our sales for the most up-to-date product information. Avcomm Technologies Inc. Add: 333 West Loop North Ste. 460, Houston, TX 77024